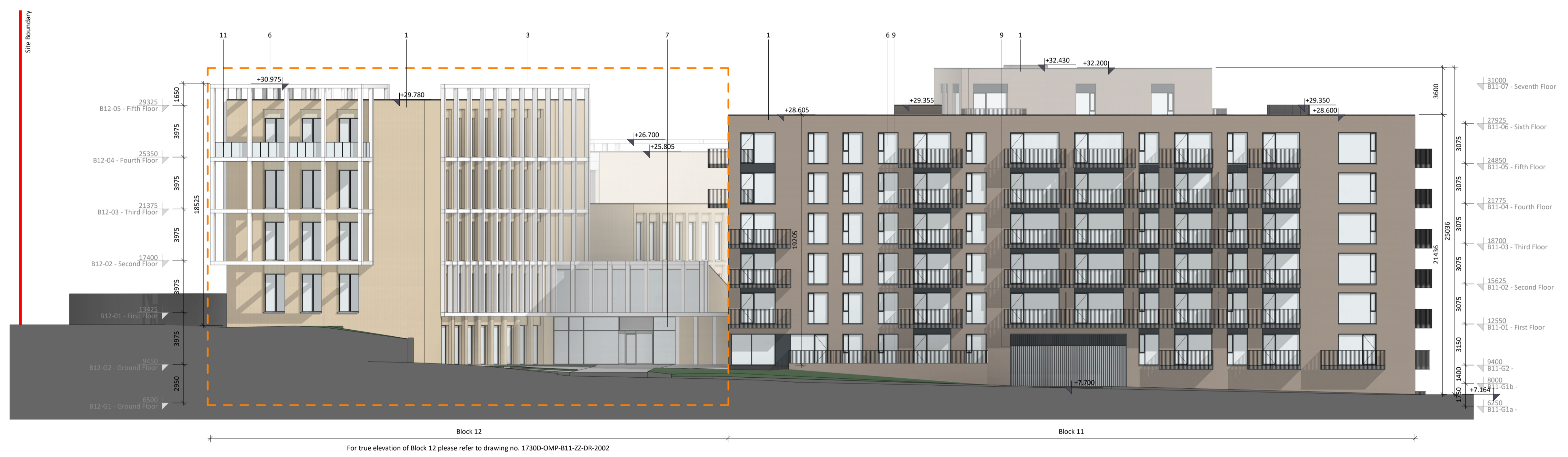


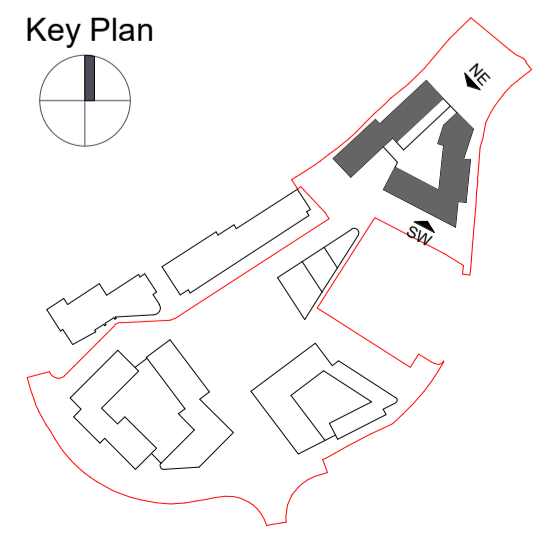


① B11 & B12-North East Elevation
1:200



② B11 & B12-South West Elevation
1:200

Block 11 and 12 Elevations



- Material Key**
- 1 Selected brick finish
 - 2 Selected render finish
 - 3 Selected stone / reconstructed stone finish
 - 4 Selected metal cladding
 - 5 Selected metal roofing
 - 6 Selected windows
 - 7 Selected frameless curtain wall system
 - 8 Selected metal louvers
 - 9 Selected metal railing
 - 10 Selected metal balcony
 - 11 Selected glass balustrade
 - 12 Selected winter garden system with metal frame
 - 13 Selected metal frame
 - 14 Selected PV Panels
 - 15 Canopy

Revision Description	Date	Rev. No.	Issued by
SHD Pre-Application to An Bord Pleanála	20-10-2021	C01	CC
SHD Application to An Bord Pleanála	10-06-2022	C02	CC/AN

Figured dimensions only to be used. This drawing is copyright of O'Mahony Pike Architects Ltd. All information is shared as per approved use in accordance with ISO19650-2:2018, Table 5; Standard Codes for Suitability of Models and Documents and the BEP. If the 'Status' field is empty, this information has been shared at S0 - WIP.

omahony pike

architecture | urban design **Dublin** **Cork**
 email: info@omahonypike.com The Chapel One South Mall
 tel: +353 1 202 7400 Mount St. Anne's Cork City
 fax: +353 1 283 0822 Milltown, Dublin 6 Co. Cork
 www.omahonypike.com D06 XNS2 Ireland T12 CCN3 Ireland

Project Code: 1730D
 Project Lead: SD
 Drawn By: SW
 Job No.: 1730D
 Purpose: Planning

Scale @ A1: 1:200
 Date: 10-06-2022
 Revision: C02
 Status: A3

Project: **Jacob's Island Strategic Housing Development**
 Location: **Jacobs Island, Mahon, Co.Cork**
 Client: **Hibernia Star Ltd.**

Drawing Title: **Block 11 and 12 Elevations**
 Drawing No.: **1730D-OMP-B11-ZZ-DR-A-2001**

Source File: 1730D-OMP-ZZ-DR-A-0001.rvt